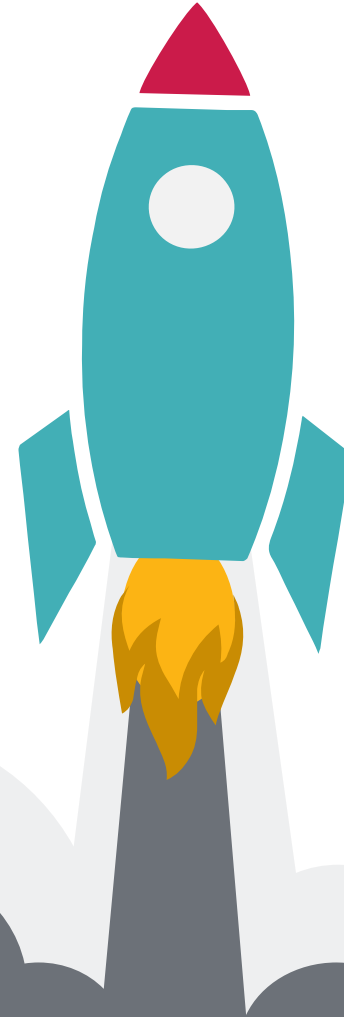


Private Investment Export Project

“Great things in business are never done by one person. They’re done by a team of people”.-[Steve Jobs](#)



Problem of EXPORT



?
What
QUANTITY

?
Which
PRODUCT

?
Who
BUYS

Solution of EXPORT



**Start with
10.000 TONS**

Contacted
over 100 Farmer
Over 10.000
hectares

**GREEN
MUNG BEAN**

CROP ROTATION
Fast Ripening
Long term
Storage

**China,
Russia, Turkey,
U.A.E., India**

Top Importers
Logistic available
No need Organic
Certificate

Market validation

Mung Bean origin **TURKMENISTAN**



**Good for next
crop: WHEAT
& COTTON
LEAVES
150-250KG
Nutrition 1.Ga
SCIENCE
ACAD. & FAO
Approved**



**Best for: CROP
ROTATION
Suitable for
planting after
STATE-
ORDERED
CROPS
That is 70% of
All Farmers
Fields**



**Best for:
IRIGATION
WATER
SAVING
1-2 WATERING
HIGH WEATHER
TEMPERATURE
RESISTANT**



**Best: VALUE as
a second crop
EXTRA
EARNING
in 65-80 DAYS
BIG DEMAND &
STABLE PRICE**



**Suitable for
LONGTERM
STORAGE
EASY LOGISTICS
NO STRICT
EXPORT-QUOTA
REGULATIONS**

Market Size

**5th Biggest – UZBEKISTAN's
Mung Bean Export
value in 2016**



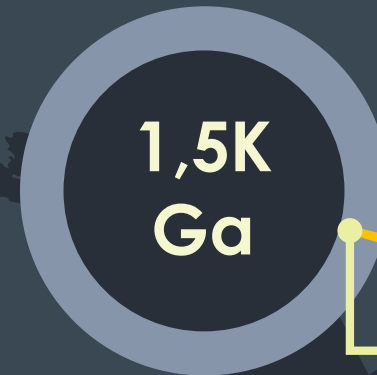
**2,5% of WORLD
EXPORT MARKET
67.000 Tons of
Mung bean
Exported**

**TOP 5-IMPORTER
India, China, Vietnam,
Japan, UAEs' Value**



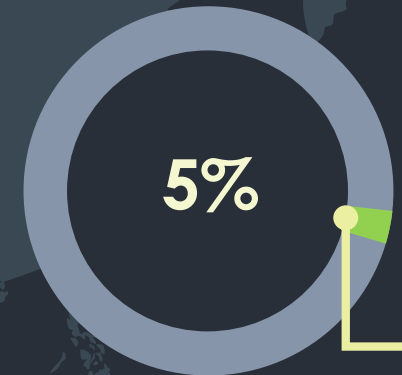
**70% of WORLD
EXPORT VALUE
1,97 Billion**

**TURKMENISTSN
Mung Bean
Current Sown area**



**0,2% of WHEAT
SOWN AREA
out of 700K Ga**

**Target AREA by 2020
As CORP ROTATION out
of 700K WHEAT SOWN Ga**



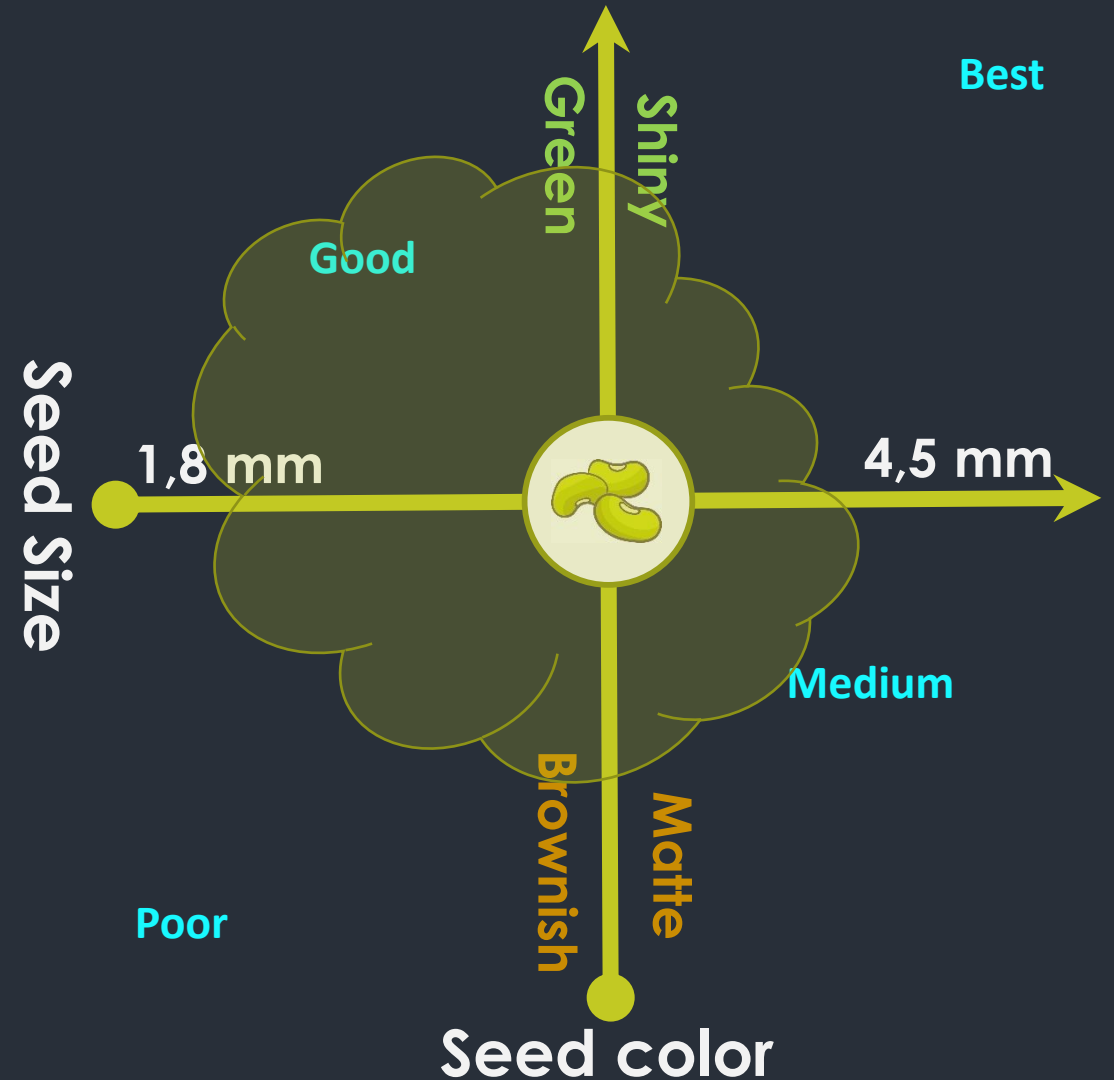
**35.000 Hectares
Can produce
40K TONS HARVEST
In Value \$20 Million**

Product

Mung Bean:

- in the legume family-Vigna Radiata
- alternatively known as **THE GREEN GRAM, MAASH, OR MOONG.**
- 25kg & 50kg PP BAGS.
- **Type:** Common.
- Dried.
- **Price include Delivery Terms:** FCA, CIP, DAF, CIF.

Price and grade range policy:



Business Model

